

**PRAXIS CARE
ORGANISATIONAL STRUCTURE
SENIOR LEADERSHIP TEAM**



Carol Breen
CEO

David Walsh
DIRECTOR OF FINANCE &
CORPORATE SERVICES

Nikki Irwin
ACTING DIRECTOR OF HR

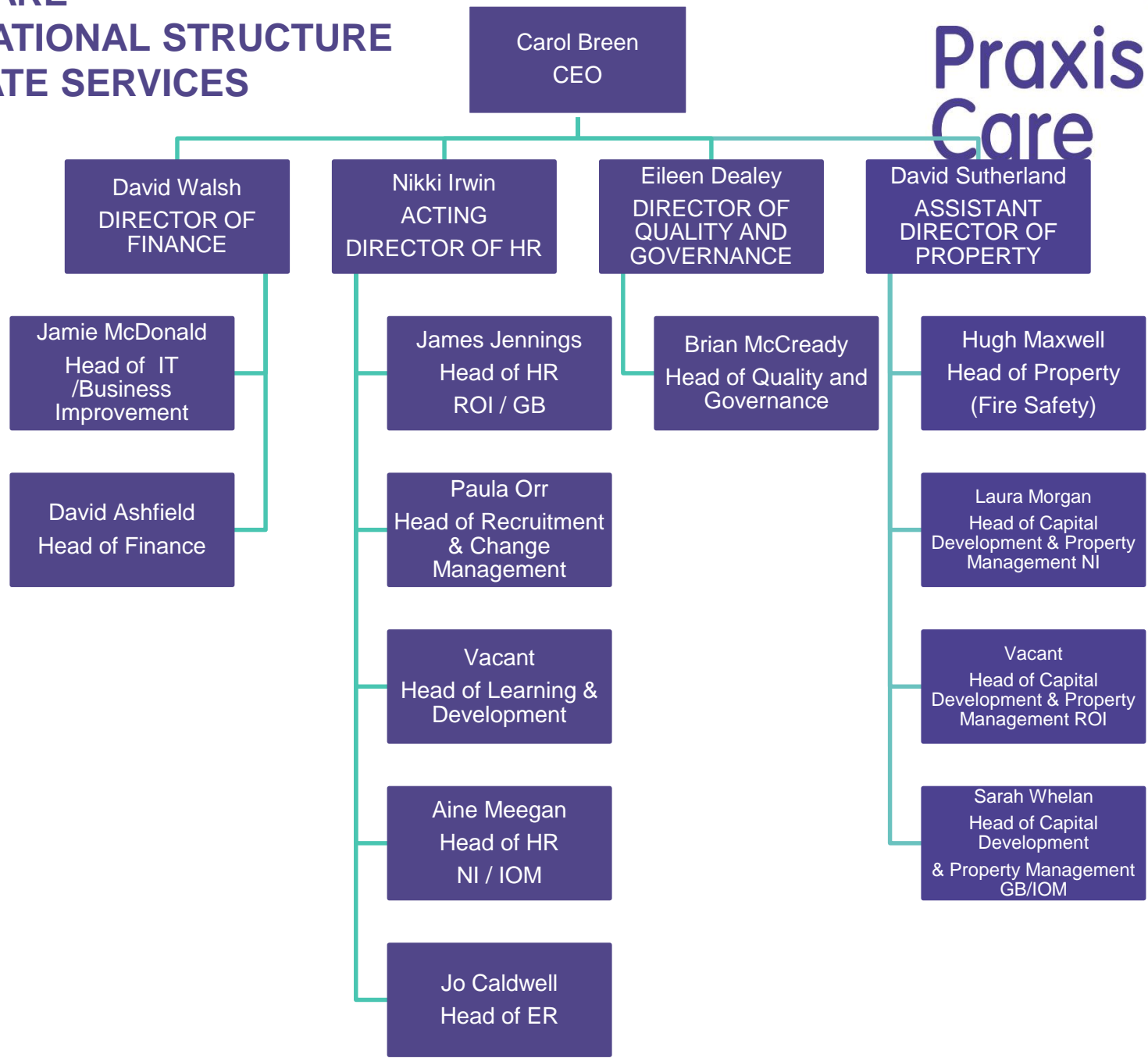
Eileen Dealey
DIRECTOR OF QUALITY &
GOVERNANCE

Greer Wilson
DIRECTOR OF CARE &
DEVELOPMENT NI & IOM

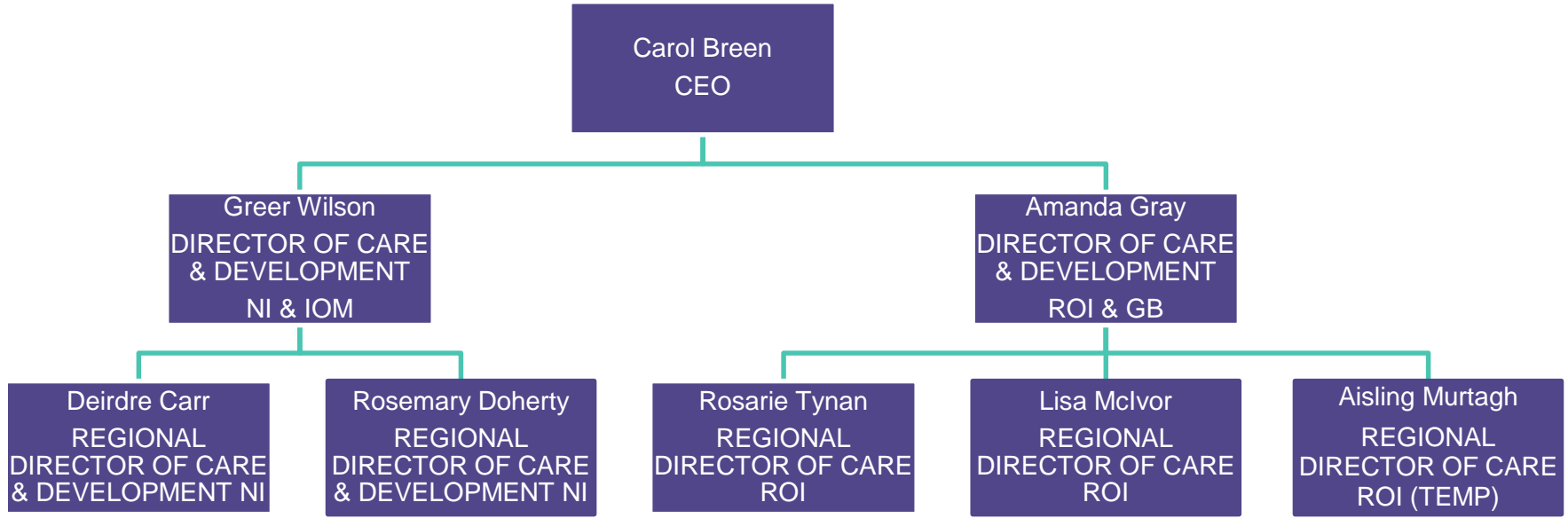
Amanda Gray
DIRECTOR OF CARE &
DEVELOPMENT ROI & GB



PRAXIS CARE ORGANISATIONAL STRUCTURE CORPORATE SERVICES



PRAXIS CARE ORGANISATIONAL STRUCTURE CARE AND DEVELOPMENT



PRAXIS CARE ORGANISATIONAL STRUCTURE CARE & DEVELOPMENT NORTHERN IRELAND & ISLE OF MAN



Greer Wilson
Director of Care &
Development NI / IOM

Deirdre Carr
Regional Director of Care &
Development NI

Vacant
Head of Marketing &
Communications

Jenny Cassells
Head of SP &OMS

Rosemary Doherty
Regional Director of Care &
Development NI/IOM

Aine Murnin
Head of Operations

Darran McQuoid
Head of Operations

Nikki Taylor
Temp Head of Operations

Eioghnn Macleod
Head of Operations

Julie Ormond
Head of Operations
IOM

Ciara Duffy
Head of Operations

Sandra Murray
Head of Operations

Shirley-Anne Hyslop
Head of Operations

Vanessa Coulter
Head of Operations

Stephen Fitzpatrick
Head of Operations
(Temp)

**PRAXIS CARE
ORGANISATIONAL STRUCTURE
CARE & DEVELOPMENT
REPUBLIC OF IRELAND
& GREAT BRITAIN**

