

# ANNUAL REPORT

# 2011/2012

## INVESTING IN THE FUTURE



Produced in Partnership  
with Service Users



**Praxis**  
care

## Vision

Passionately caring about everyday living

## Mission

Empowering adults and children with mental ill health, learning disability, or acquired brain injury to enjoy everyday living, irrespective of the complexity of their needs

## Values

### Promoting Independence - the purpose of Praxis Care

Praxis Care will help every individual to become as **independent** as he or she can be, to reach their **full potential**, and be active citizens in their communities.

Praxis Care will enable individuals to make **informed choices** about their own lives, and involve them in all aspects of the work of Praxis Care through the organisation's commitment to a **user focused** ethos.

### Promising Integrity - the principles of Praxis Care

Praxis Care will respect the **rights** of every individual, ensuring that their **confidentiality, privacy** and **dignity** are secured.

Praxis Care will act **honestly, openly** and with **transparency** in all interactions with service users and their representatives, stakeholders, and the public.

Praxis Care will foster and promote a sense of **social responsibility** throughout the organisation to the **benefit** of the environment and everyone with whom the organisation comes into contact.

### Protecting Individuals - the professionalism of Praxis Care

In all the organisation's actions, the **best interests** of service users are paramount.

Praxis Care will carry out its work in partnership with other organisations, **safeguarding** individuals, ensuring risk is managed, and encouraging **positive risk taking**.

The organisation's focus on **continuous improvement** means that it strives for the **highest standards**, with current **best practice** guiding everyday service delivery.

Praxis Care's staff are committed to their own **professional development** and to maintaining the highest **codes of conduct** expected by service users and the public.

# Foreword

## Investing In The Future

In spite of another year of budget cuts and financial uncertainty, Praxis Care has continued to deliver services of the highest quality to over one thousand adults and children in Northern Ireland, the Republic of Ireland, England, and the Isle of Man. The organisation has strategically decided that it is important to invest in the future so that it will be better placed to fulfil its mission and meet the challenges of operating in difficult financial times.

As part of this investment in the future, Praxis Care commenced the development of a Management Information System this year. When fully implemented, it will streamline the work of schemes and departments throughout the organisation, making Praxis Care more able to respond effectively to meeting the needs of service users and stakeholders.

Whilst the current environment is difficult and challenging, it also provides opportunities for further growth and development. As a result, the Development Department has invested in additional staff resource to take advantage of opportunities in the four jurisdictions.

During the financial year, this investment in the future has already seen Praxis Care commence new services in Birmingham and Dudley in England, Bective in the Republic of Ireland, and Ballymena in Northern Ireland, whilst the existing children's services in Leicester and Melton have been successfully re-tendered.

Significant funding was also secured to develop the 'Moving Up' Project, which will provide a wide range of training opportunities for service users. This investment in training for service users will assist them to meet personal outcomes, increase their employability and encourage stronger and more integrated community involvement.

In order that staff remain equipped to deliver services, Praxis Care has invested in the future by embarking on a major new training programme for a significant number of staff. The first group of staff undertaking the QCF Level 5 Diploma in Leadership course commenced in 2011 and it is envisaged that this will be an exciting new opportunity for staff to develop their future careers within Praxis Care.

During the year, Praxis Care successfully achieved the Investors in People Gold Award. This is a tremendous achievement for the organisation and a fitting acknowledgement of the commitment and hard work of all staff and volunteers during the year. It is the dedication of staff and volunteers in fulfilling the organisation's vision and mission that continues to bring growth and success to Praxis Care.

This year also saw the retirement of Bill Canning as Chairman of the Board. Bill voluntarily worked with Praxis Care since the early 1990's and became Chair in 1999 during which time he served the Board extremely well, providing valuable support to the Senior Management Team. Bill will be greatly missed and the organisation hopes that he will have good health to enjoy his retirement.



Nevin Ringland

**Nevin Ringland - Chief Executive & Founder**  
*Northern Ireland, Republic of Ireland, England and Isle of Man*



Ken Brundle

**Ken Brundle - Chairman**

# Praxis Care Services



*Minister Poots on his visit to St Paul's Court with, Jean Diamond, a resident at St Paul's Court, Laura Fleming, Project Manager, and Vice-Chair John McGregor*

## Mental Health Services

Praxis Care has a wealth of experience in supporting individuals experiencing mental ill health, which is evidenced in the range of available services. These include supported living services providing housing with care and support, Home Response domiciliary care, floating support, day activity and drop in services, and a number of 'out of hours' services. All these services are aimed at promoting independence and supporting recovery.

## Adult Learning Disability Services

Praxis Care provides a range of services for adults with learning disabilities, including those with complex needs and behaviours which challenge. As well as supported living services providing housing with care and support, there is residential and nursing home provision, day opportunity placements including training and employment opportunities, respite and domiciliary care.

## Children's Learning Disability Services

Praxis Care provides both long term care and shared care for children with severe learning disabilities. Services include respite for families of children who require high levels of personal care or help with complex behaviours.

## Dementia Services

Praxis Care provides a range of supported living and floating support services to older people with dementia. Support focuses on maintaining the individual's independent living skills, and uses various assistive technologies to compensate for any sensory and cognitive impairment.

## Acquired Brain Injury services

There are a range of services provided to individuals with an acquired brain injury. These include supported accommodation provision and home based care services.

## Volunteer Befriending Services

There are a number of volunteer befriending services for people with mental ill health, and learning disabilities. These services help reduce social isolation and improve the wellbeing of individuals.

## Counselling Service

Praxis Care offers a confidential counselling service for people affected by a wide range of mental health issues.

# Investing In Political Persuasion

Health Minister, Edwin Poots visited two of Praxis Care's projects during the year, to see for himself how the lives of service users are transformed through the investment in quality services. He visited the Secret Garden which is situated within the original walled garden of Hillsborough Castle. It provides work skills opportunities for individuals with learning disabilities. The Minister visited the coffee shop and enjoyed a tour around the sights in the garden.

Following the visit, Minister Poots remarked: "I have been very impressed by the enthusiasm, professionalism, and dedication shown by all those people that I met today, both staff and trainees alike".

Minister Poots also visited St Paul's Court in Lisburn which is owned by Trinity Housing Association and managed by Praxis Care. St Paul's Court provides housing and support to older people with dementia, offering them opportunities to remain independent, and living in the community for as long as possible.

Minister Poots remarked that:

**“My department is very aware of the valuable contribution made by the independent sector to the health and well being of the people of Northern Ireland.”**



*John Henry, a trainee at the Secret Garden, Hillsborough, and Minister Edwin Poots enjoy the fruits of the garden.*



*Minister Poots with Lizzie Patton at St Paul's Court in Lisburn*

# Investing In Service Users



Members of the UP in Policy Group with some of the information leaflets they have devised for Praxis Care

It is a priority for Praxis Care to ensure that services are planned, delivered, and evaluated by those who use them. Throughout the year Praxis Care has sought to provide increased opportunities for involvement and partnership for all those who use its services.

Service user involvement is about making sure that the people who use services have the opportunity to voice their opinions and the chance to make real, sustainable change to those services. A number of activities promoting involvement went on throughout the organisation during this year.

## Involvement Strategy

Praxis Care's Service User Involvement Strategy was reviewed to reflect the views and opinions of service users and as a consequence, service users have become involved in a range of activities. Service users have assisted the Staff Development Department deliver training to staff in a range of courses. The 'Views from U' Survey, carried out by the Research Department, was devised in conjunction with service users. Peer

interviewers were also training to enable them to assist other service users complete the surveys. Service users have also been involved in the recruitment of care staff at some schemes, and it is hoped that this opportunity for involvement can be increased next year.

## UP in Policy Group

A new group, the UP in Policy Group, met regularly to give service users the opportunity to ensure that policies implemented by the organisation were devised in partnership with service users. The group reviewed a number of existing policies and made valuable suggestions about how the policy implementation could improve services. The work of this group was instrumental in developing the organisation's Service User Involvement Strategy. A considerable amount of the group's time was also well spent on the development of information leaflets, providing guidance to service users on a range of subjects.



# Investing In Service Users



## Moving Up Project

Praxis Care was successful in securing funding from the European Social Fund and the Department of Employment and Learning to implement an exciting new programme aimed at increasing the skills, knowledge, and employability of service users. The Moving Up Project is a person centred programme which focuses on investing in service users and equipping them for the future by enhancing their individual employment skills.

Specialist accredited training is available in the subject areas of horticulture, catering, information technology, social and employment skills, giving service users the opportunity to achieve national qualifications. The Moving Up Project will also focus on further developing the social enterprise schemes within Praxis Care such as the coffee shops and horticultural projects.

## Service User Awards

The North and West Regional College in Derry hosted an awards ceremony for service users to celebrate their achievements in completing a range of courses. Sean Coyle, from Radio Foyle presented the awards before the audience of service users, carers and family members enjoyed a beautiful lunch, also provided by the North and West Regional College.

Everyone enjoyed the event, and the service users are looking forward to working with the college and completing further courses in the future.



Sean Coyle is pictured with service users and staff from the Cookie Company at the awards ceremony hosted by the North and West College

# Investing In Standards

## Investing in People

Praxis Care is aware that the future success of the organisation can only be secured through the effective management and development of its people. The Investors in People standard is the framework used by Praxis Care to help deliver that successful future.

In 2011, Praxis Care was assessed against the Investors in People standard and was successful in going beyond the standard to achieve the Gold recognition. This is a remarkable achievement for the organisation, and everyone in Praxis Care can be proud of this award.

Moving into such an uncertain and competitive future, Praxis Care will build on this award, and use the framework to ensure continued investment in the effective management and development of Praxis Care's staff.

In their report, the assessors noted that the staff of Praxis Care, "...consistently display a sense of loyalty, commitment and pride in their work and are clearly driven by the belief that they are making a difference to the lives of their service users."

## ISO 9001:2008

In addition to the Investors in People Award, Praxis Care was once again successfully accredited against the ISO 9001:2008 framework for the entire organisation. The implementation and maintenance of this quality management system has helped add value, improve management effectiveness, and raise the standard of service provided to our service users.



*Nevin Ringland, Chief Executive of Praxis Care, with the Investors in People certificate which was presented following the organisation's success in achieving the Gold Award*

**“...consistently display a sense of loyalty, commitment and pride in their work and are clearly driven by the belief that they are making a difference to the lives of their service users.”**



# Investing In Training

During the Investors in People assessment, the assessors remarked that there was an impressive range of learning and development opportunities, including formal and informal activity to support both professional and personal development within the organisation.

## QCF Training

Praxis Care continued to invest in its staff throughout the year with the introduction of its QCF Level 5 Diploma in Leadership for Health and Social Care and Children and Young People Services. The course will enable Team Leaders to consolidate and expand their knowledge base, skills and experience. At the same time, the course has provided a route for these Team Leaders to progress their careers in Praxis Care as part of the organisation's career planning strategy.

## National Training Awards

The National Training Awards aim to recognise businesses that have made an outstanding contribution and commitment to training, learning and development in the workplace.

In September 2011 Praxis Care won the National Training Award for a Macro employer (over 1000 employees) for Northern Ireland. The award was for the 5 day Management of Violence and Aggression training provided by the Staff Development Department to staff in challenging behaviour schemes.

The regional and UK judges commented that it was quite clear that Praxis Care had gone beyond any mandatory requirements and made significant investment in creating a customised learning and development programme, with further development potential being demonstrated for the future.

This success as a regional winner, qualified Praxis Care for a place in the national final held in the ExCel Arena, London, in October 2011. Nevin Ringland, Chief Executive, Carmel Cunningham, Training Manager and Danny Doyle, Training Instructor, all attended this prestigious event, where Dragon's Den star Theo Paphitis presented the Awards.



Staff from the Staff Development Department at the presentation ceremony for the regional finals of the National Training Award, held at Stormont. Also pictured are Dr Stephen Farry, MLA, Nevin Ringland, Chief Executive of Praxis Care, and Claire McCollum from the BBC



Pictured with Danny Doyle, Praxis Care Training Instructor, at the National Training Awards final in London, is Theo Paphitis, Geoff Russell, Chief Executive of the Skills Funding Agency, and Baroness Wilcox

# Investing In Staff

Praxis Care's investment in its staff was celebrated at its annual Staff Awards Ceremony, which was held at the La Mon Hotel and Country Club. This is the fifth year that Praxis Care has held an awards ceremony to recognise the outstanding performance and achievements of its staff. Speakers at the event included Ken Brundle, Chairman of the Praxis Care Board and motivational speaker, Paul Tracey. Guests were also entertained by The Singing Chefs and the Smyth Family Irish Dancers.

Nevin Ringland, Chief Executive stated, "The success of Praxis Care is built on the dedication and hard work of all of the staff. Our staff can be rightly proud of their achievements, knowing that their work makes a real difference to this organisation and to our service users."



*Ian Keys, Team Leader, Gallagh House receives the CEO Special Award from Nevin Ringland and Ken Brundle*



*Jonathan Doudican is presented with the Volunteer of the Year Award by Nevin Ringland and Ken Brundle*



*Gina Lowe, Team Leader, Melton Project, in Leicestershire, England receives Dr Etta Eid-Jennings Award for Outstanding Performance from Nevin Ringland and Ken Brundle*



*Paul Ormond Smith, Manager, Glenroyd, in the Isle of Man receives Dr Etta Eid-Jennings Award for Outstanding Performance from Nevin Ringland and Ken Brundle*

# Investing In Staff



*Rosaleen Hannon is presented with the Service User Involvement Award on behalf of the Navan Scheme from Nevin Ringland and Ken Brundle*



*James Farrell, Wendy Orr, Deirdre Altemeyer, Carmel Keenan and James Ormond receive Training Awards for achieving Level 4 NVQ in Health and Social Care*

# Investing In Volunteering

Volunteering is an important aspect of the work of Praxis Care, from the work of befrienders who freely give of their own time to help improve the lives of others, to the activities of the Board members in the overall management of the organisation. This importance was evidenced during the year when the new post of Volunteer Co-ordinator was created to further strengthen Praxis Care's volunteering strategy. The valuable contribution of Praxis Care volunteers was recognised with an Awards Ceremony in Derry, where volunteers were acknowledged for their contribution to volunteering.

In December, Praxis Care volunteer, Alan Crawford Bell MBE, received a Volunteer Recognition Award as part of Belfast City Council's Older Volunteer of the Year 2011 awards. This award was in recognition of Alan's significant volunteering contribution to the work of Praxis Care.



Margaret Haslam receives her 20 year award from Phyllis Cassidy at the Derry Volunteer Befriending Awards



Kevin Gallagher receives his 5 year award from Phyllis Cassidy

## The Belfast Marathon

Runners from throughout Northern Ireland came out to support the work of Praxis Care at the Belfast Marathon. A number of schemes took part in the event, with volunteers participating in the fun run and the relay, as well as some brave souls who completed the whole marathon.



Service users and staff who volunteered to run the Belfast Marathon in May



Staff from the scheme in Kesh who volunteered for the Belfast Marathon

# Investing In Volunteering

## The Big Lunch

The Big Lunch was a Lottery funded project based on a community initiative to get to know your neighbours. Staff and service users in the Praxis Care schemes in Larne joined forces with Larne Grammar School to organise a Big Lunch for the local community. Despite the poor weather, the event was a huge success, with over seventy people enjoying a range of delicious food and entertainment.



Staff from the Larne scheme who organised the Big Lunch for the local community

## The People's Millions

Praxis Care's, 'Garden of Eden' project won a place on the final list of projects that went forward to the public vote for the Big Lottery, People's Millions Fund, which was held in June 2011.

The staff within the Foyle projects worked tirelessly for two weeks leading up to the vote in a bid to maximize the possibility of the Garden of Eden proposal being successful, ringing and visiting businesses and companies in the city. The campaign finished with a fun-filled music event at the Guildhall in Derry.

Although the 'Garden of Eden' proposal did not win, the scheme received over 4000 votes, and the experience was wonderfully positive for everyone involved. The event in the Guildhall Square was a great success with service users, staff and family members distributing leaflets and delicious treats made by the 'The Cookie Company' to the public.



Service users and staff from the Cookie Company in Derry at the Big Lottery, People's Millions Fund event in Guildhall Square

# Investing In Health

World Mental Health Day was celebrated in October, and its theme was 'Investing in Mental Health'.

Praxis Care hosted a series of events to support and promote the day, which included an awareness event at the Long Gallery in Stormont. Ciaran Moore from Portadown gave an impassioned address to the audience about his experiences of mental ill health, while Health Minister, Edwin Poots spoke about the importance of raising awareness of mental health.

"Mental health is very important, it is a state of wellbeing enabling individuals to realise their abilities, cope with the normal stresses of life, work productively and fruitfully, and make a contribution to their communities".

Acknowledging World Mental Health Day's theme of 'Investing in Mental Health' the Minister stated that:

"The responsibility of investment falls to all of us. Individuals, groups, charities, businesses and governments, should be looking to see what can be done to improve our mental health and wellbeing. More needs to be done to invest in quality mental health services."



Ciaran Moore, accompanied by Project Manager Joe O'Neill at the World Mental Health Day event in Stormont

**"Mental health is very important, it is a state of wellbeing enabling individuals to realise their abilities, cope with the normal stresses of life, work productively and fruitfully, and make a contribution to their communities".**

Health Minister, Edwin Poots



Ciaran Moore promotes the launch of World Mental Health Day at Stormont along with Kieran McCarthy MLA, Praxis Care Chief Executive Nevin Ringland, and Health Minister Edwin Poots

# Investing In Partnerships



*The group of service users and staff pose for a formal picture with President Mary McAleese*

Praxis Care continues to work in partnership with agencies and organisations, and be actively involved in a number of external groups and forums active in promoting the work of social care organisations.

The Disability Social Care Forum is currently chaired by Praxis Care's Chief Executive Nevin Ringland. This forum was established to support the voluntary sector in addressing issues which promote the sector's role in relevant government policy development, and in the design and delivery of services.

Praxis Care is also a member of the Committee Representing Independent Supporting People Providers (CRISPP). The Committee takes action on issues of general concern to the members, liaises with the Supporting People administrative authority, and discusses strategic issues with the multi-agency Supporting People Commissioning Body.

Praxis Care continues to be a member of ARC, an organisation dedicated to promoting real change in the learning disability sector. ARC provides an opportunity to come together with other providers to network and to share good practice and advice.

The Northern Ireland Safeguarding Partnership has the aim of developing a strategic approach to safeguarding

adults. Praxis Care is represented on NIASP and is also represented on Local Adult Safeguarding Partnerships.

Praxis Care has been involved in the development of a new Research Network in Northern Ireland. A steering group was established in 2011 from interested third sector organisations to form a research network in Northern Ireland that would benefit people with mental ill health. The network will be formally launched in 2013.

In 2010 a new 'Framework for Mental Health Nursing' was launched in Northern Ireland. Praxis Care has been part of the Regional Implementation Group tasked with securing the implementation of the strategy's recommendations.

Praxis Care, in partnership with the Health Service Executive, provides a number of services in the South of Ireland, and has hopes of developing additional services there in the future. Links with the South were strengthened further with a visit by a group of staff and service users to Aras an Uachtarain, home of President Mary McAleese.

The group were made very welcome and were greeted in person by President McAleese, who spent time speaking to every member of the group. Everyone enjoyed the trip to Dublin and the opportunity to meet with the Irish President.

# Investing In Governance



Bill Canning (centre) is presented with two drawings by artist, and service user, David Blair (left) and Michael Gourley, Team Leader at The Parc, Antrim

Bill Canning retired as Chairman of the Board in November 2011. Bill had been involved in the work of Praxis Care since the early 1990's, first as Chair of the Committee for the scheme in Antrim, and then as the voluntary Chair of Praxis Care since 1999. His retirement was marked at a special luncheon in the Dunadry Hotel, attended by the Praxis Care Board and the Senior Management Team. Bill was presented with two drawings by artist, and service user, David Blair who attends the Parc in Antrim.

Bill was replaced as Chairman of the Board by Ken Brundle. During the year, the Board was also strengthened with the appointments of John Barrons and Donal McFerran.

Ken Brundle has been employed in various roles within Short Brothers PLC since 1973, including Information Technology, operational research and project management roles. In May 2000, Ken was appointed Executive Vice President of Operations at Bombardier Aerospace in Canada. He returned to Belfast in 2004 to take up the role of Vice Chairman. Ken was a former Chairman of both Maydown Precision Engineering and Belfast City Airport. He is also a Director of the Ulster Wildlife Trust and the Northern Ireland Cancer Fund for Children.

John Barrons is retired from a career in journalism and newspaper management in the UK and USA. He is a past President of the Newspaper Society, and Chairman of the Printing Industry Research Association. John's directorships have included Pearson Longman Ltd, the Press Association and (in NI) Century Newspapers Ltd, Business in the Community and City West Action Ltd. John also volunteers with Bitc's Greater Belfast Business Leadership Network and their Time to Read programme.

Donal McFerran is a qualified solicitor who practised as a partner in a litigation firm in Belfast. Donal retired as a Parole Commissioner and as a member of the Mental Health Tribunal in 2011. However, he remains a Sentence Review Commissioner and a Deputy County Court Judge.



Ken Brundle  
(Chairman) - BSc (Hons.)



John Barrons



Donal McFerran - LL.B  
M.Phil(Med)



# Investing In Governance

## Board Members

**Mr Ken Brundle, Chair** - BSc(Hons)

**Mr John McGregor, Vice Chair** - MSc Eng

**Dr Oliver Shanks** - MB, BCh, BAO, MRCP, FRCPSvch

**Miss Anne Vance** - MA, Dip. Car.ED, LGSM-Speech

**Mr Vincent Malone** - Fellow of Institute of Bankers in Ireland

**Dr Etta Eid-Jennings** - MBE

**Mr Donal McFerran** - LL.B, M.Phil(Med)

**Mr John Barrons**

## Public Benefit

The Board is satisfied that the activities and achievements of the organisation during the year demonstrate that Praxis Care's aims and objectives continue to be met, and that there is significant public benefit provided by the charity through its activities.

## Risk Management

A Governance Committee ensures that an active risk management process is in place by continually monitoring any major risks to which the charity is exposed. A risk register has been established and is reviewed at least annually. Where appropriate, systems and procedures have been established, and are periodically reviewed to mitigate any identified risks faced by the charity.

## Senior Management Team

Authority to conduct Praxis Care's day-to-day activities is delegated to the Chief Executive, who is responsible for ensuring that the agreed strategy and policies are carried out. A Senior Management Team reports to the Chief Executive and meets weekly.

### **Nevin Ringland – Chief Executive / Founder**

*BSc, Dip Bus Admin*

### **Irene Sloan – Director of Care, Quality and Governance**

*BSSc, MSSc, CQSW, CASW, CSWL, ASW*

### **Alyson Dunn – Director of Care and Development**

*MA, IPDS, ISM, CQSW*

### **Andy Mayhew – Director of Care**

*BA, MSSc, CQSW*

### **Pauline Flynn – Director of Finance**

*BSSc (Hons), FICA, FCIT*

# Service Directory 2011-2012

Northern Ireland - Mental Health Schemes			
<b>Advocacy Project</b>	A carers advocate is currently employed in the Belfast Trust area to support carers	<b>Lisnaskea</b>	Flat cluster and floating support for eleven individuals
<b>Antrim</b>	Dispersed Intensively Supported Housing for sixteen adults	<b>Lurgan</b>	Dispersed Intensively Supported Housing for twenty-one individuals, and a Home Response Service
<b>Antrim, The PARC</b>	Day Care recreational activity	<b>Magherafelt</b>	Dispersed Intensively Supported Housing for fifteen individuals, and a Home Response Service
<b>Ballyclare</b>	Supported Group House and flat cluster with eighteen individuals	<b>Newry - Connaught House</b>	Supported living group house for five individuals
<b>Banbridge</b>	Supported living group house and flat cluster for sixteen adults	<b>Newry - Kilmorey House</b>	Supported living group house and flat cluster for thirteen individuals and a Home Response Service
<b>Bangor</b>	Residential Flat Cluster for six individuals	<b>Newtownards</b>	Dispersed Intensively Supported Housing for eight adults, and a Home Response Service
<b>Coleraine</b>	Dispersed Intensively Supported Housing for fifteen adults, and a Home Response Service	<b>Portadown</b>	Dispersed Intensively Supported Housing for sixteen individuals, and a flat cluster and group living accommodation for fourteen individuals
<b>Dunmisk Manor, West Belfast</b>	Flat cluster for sixteen individuals	<b>Rockmills, Derry City</b>	Dispersed Intensively Supported Housing for twelve individuals
<b>Foyle Young People</b>	Supported Living Flat Cluster for six individuals	<b>Upper Suffolk, Belfast</b>	Dispersed Intensively Supported Housing for sixteen individuals
<b>Larne</b>	Dispersed Intensively Supported Housing for six adults, and a Home Response Service	<b>Young People Leaving Care, Antrim</b>	A befriending service for young people leaving care
<b>Laurel Lodge, Larne</b>	Supported living group house and flat cluster for twelve individuals		

Northern Ireland - Learning Disability Schemes			
<b>Beechfield Respite Unit, Conlig</b>	Children's respite care unit offering placements to thirty-seven children	<b>Hugomont, Ballymena</b>	A service providing care for young people for four individuals
<b>Bocombra Workskills, Portadown</b>	A workskills programme, for twelve individuals, where service users make, package and sell cookies to local shops and coffee shops	<b>Kesh Day Care Centre</b>	Day care service for twenty-four individuals
<b>Castle Lane Court, Lurgan</b>	Supported living accommodation for sixteen individuals	<b>Kimberley House, Newtownards</b>	Residential care home for thirteen individuals
<b>Conlig Workskills</b>	A workskills programme, for twenty-seven individuals, where service users make, package and sell cookies to local shops and coffee shops as well as working in the gardening project	<b>Le Bistro, Kesh</b>	A bakery and café providing workskills programmes for adults
<b>The Courtyard, Crumlin</b>	Supported living accommodation for twelve individuals	<b>Mantlin Cottage, Kesh</b>	Residential care home for nine individuals
<b>Derry Age Appropriate Day Care</b>	Day care service for older adults	<b>Moving Up Project</b>	Provides training and employment skills for service users
<b>Derry Befriending</b>	Volunteer befriending programme for adults	<b>Pettigoe Road, Kesh</b>	Supported living accommodation for twelve individuals
<b>Derry Cookie Company</b>	A workskills programme, for twenty three individuals, where service users make, package and sell cookies to local shops and coffee shops	<b>Rainbow Lodge, Ballymena</b>	Children's respite care unit for four individuals
<b>Forest Hill, Conlig</b>	Supported living accommodation for fourteen individuals	<b>The Secret Garden, Hillsborough</b>	A workskills programme, for twenty individuals, where service users gain experience working in a coffee shop
<b>Forest Lodge, Portadown</b>	Three residential care homes for thirteen individuals	<b>The Willows, Kesh</b>	Supported living accommodation for four individuals

# Service Directory 2011-2012

## Northern Ireland - Dementia Schemes

<b>Clements Court, Derry</b>	Individual flats with housing support services for thirteen individuals	<b>Lisnaskea Floating Support</b>	A floating support service
<b>Coleraine Floating Support</b>	A floating support service for older people	<b>Parklands, Lisburn</b>	Supported living group house for eight individuals
<b>Foyle Floating Support</b>	A floating support service	<b>St Paul's Court, Lisburn</b>	Purpose built accommodation with fifteen bungalows and eight flats

## England - Mental Health Schemes

<b>Birmingham Floating Support</b>	A floating support service	<b>Dudley Floating Support</b>	A floating support service
<b>Bury Floating Support</b>	A floating support service for people with substance misuse issues	<b>Plasden Court, Manchester</b>	Dispersed Intensively Supported Housing for fifteen individuals, with an outreach service for four individuals

## England - Learning Disability Schemes

<b>Coombe House, Kidderminster</b>	Nursing care accommodation for twelve individuals	<b>Norwood Drive, Cheshire</b>	A residential home for six individuals
<b>Glenfield Project, Leicestershire</b>	Children's respite care unit for four children	<b>Praxis Domiciliary Care Agency, Midlands</b>	Provides support for four individuals and home care for children
<b>Malton Drive, Cheshire</b>	A residential home for six individuals	<b>Rose Orchard, Kidderminster</b>	Nursing care accommodation for five individuals
<b>Melton Project, Leicester</b>	Children's respite care unit for four children	<b>Weldon Road, Cheshire</b>	A residential home for seven individuals

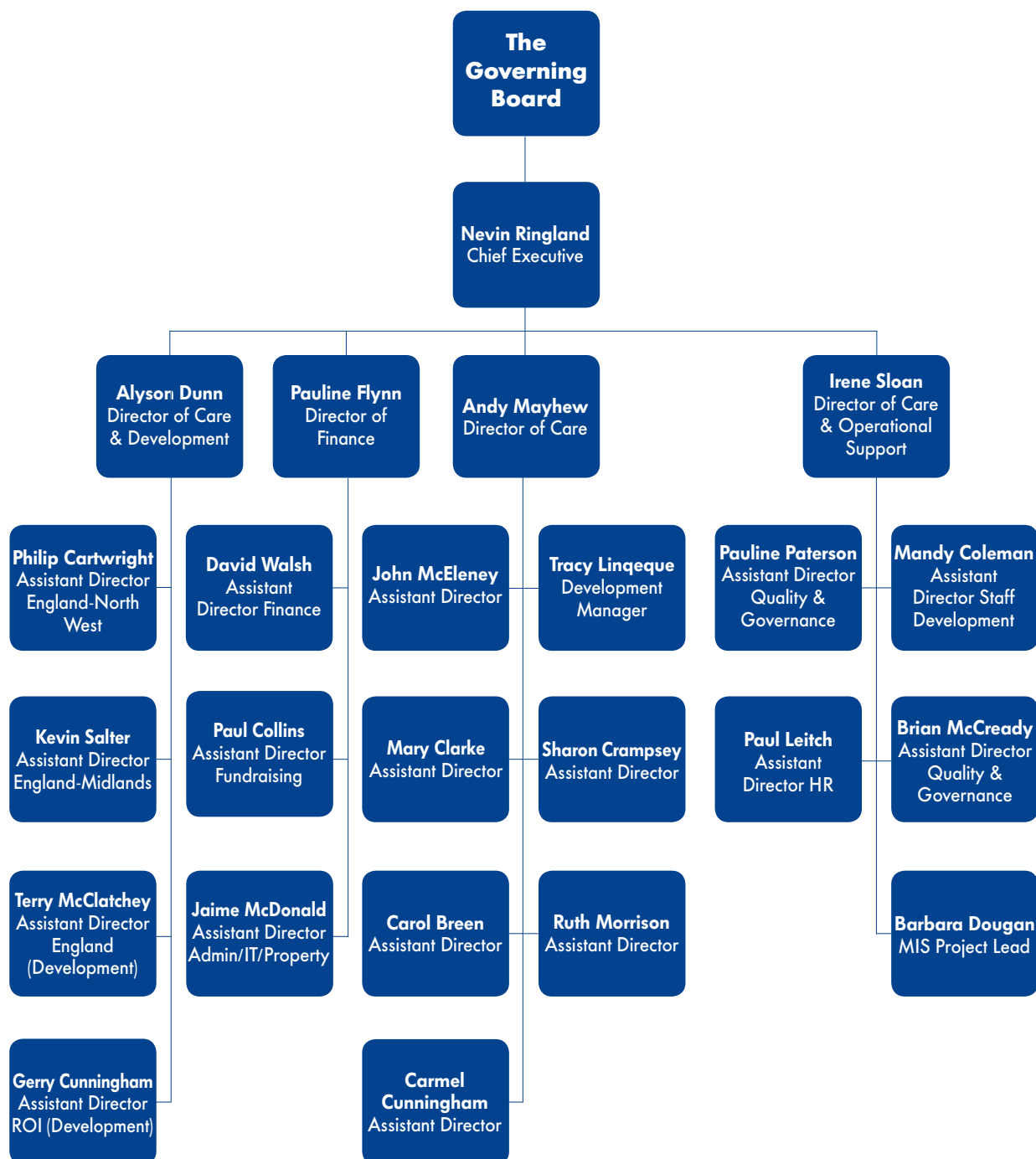
## Republic of Ireland

<b>Ballinamore, Leitrim</b>	Supported living accommodation for two individuals with learning disabilities	<b>Donabate</b>	Community house providing care and support for three individuals with learning disabilities
<b>Blandchardstown</b>	Domiciliary Service providing care and support	<b>Grange Bective, Navan</b>	Children's Weekend Respite Service for five children
<b>Brookvale</b>	Community living for eight individuals	<b>Meenalig and Swan House, Navan</b>	Supported living accommodation for eleven individuals with mild to moderate learning difficulties and challenging behaviour
<b>Cornerstones, Ardee</b>	Supported living accommodation for four individuals	<b>Mullingar</b>	Residential unit providing care and support to six individuals with learning disabilities

## Isle of Man

<b>Glenroyd</b>	Supported living accommodation for five individuals with learning disabilities	<b>Isle of Man Supported Living Accommodation</b>	Supported living accommodation for five individuals, with an Outreach Service for another five individuals in Douglas
<b>Isle of Man Home Support Service</b>	Provides 165 hours per week to clients living at home	<b>The Star Club</b>	Club House day centre offering drop-in service and training programmes

# Organisational Structure During 2011-12



# Statement Of Financial Activities

Consolidated Statement of Financial Activities (incorporating the Income and Expenditure account)  
for the year ended 31 March 2012

	Unrestricted funds 2012 £	Restricted funds 2012 £	Total funds 2012 £	Total funds 2011 £
<b>Incoming resources</b>				
Income from generated funds:				
Voluntary income	105,026	-	105,026	29,469
Activities for generating funds	92,285	-	92,285	31,968
Investment Income	37,891	-	37,891	20,330
Income from charitable activities	21,701,696	4,620,315	26,322,011	26,039,008
Other incoming resources	82,535	519,538	602,073	657,361
<b>Total incoming Resources</b>	<b>22,019,433</b>	<b>5,139,853</b>	<b>27,159,286</b>	<b>26,778,136</b>
<b>Resources Expended</b>				
Costs of generating funds	158,316	-	158,316	155,252
Charitable activities	20,849,306	4,584,975	25,434,281	24,921,187
Governance costs	325,691	-	325,691	190,100
Loss on disposal of fixed assets	100,264	-	100,264	15,003
<b>Total Resources Expended</b>	<b>21,433,577</b>	<b>4,584,975</b>	<b>26,018,552</b>	<b>25,281,542</b>
<b>Net incoming resources</b>	<b>585,856</b>	<b>554,878</b>	<b>1,140,734</b>	<b>1,496,594</b>
Exceptional items	(5,207,076)	-	(5,207,076)	(2,200,000)
Unrealised loss on investments	(2,314)	-	(2,314)	(1,133)
Unrealised foreign exchange gain/(loss)	1,439	-	1,439	(94,336)
<b>Net movement in funds for the year</b>	<b>(4,622,095)</b>	<b>554,878</b>	<b>(4,067,217)</b>	<b>(798,875)</b>
Transfer between funds	519,538	(519,538)	-	-
Total funds brought forward as restated	11,875,534	77,316	11,952,850	12,751,725
<b>Total funds carried forward</b>	<b>7,772,977</b>	<b>112,656</b>	<b>7,885,633</b>	<b>11,952,850</b>

The Statement of Financial Activities includes all gains and losses in the year and therefore a statement of total recognised gains and losses has not been prepared.

All of the above amounts relate to continuing activities.

# Information

If you would like to receive more information about Praxis Care services or if you would like to receive this information in a different format or language, please contact:

Praxis Care Head Office  
25 – 31 Lisburn Road, Belfast, BT9 7AA

**T:** 028 9023 4555

**F:** 028 9024 5535

**[www.praxiscare.org.uk](http://www.praxiscare.org.uk)**

Issued December 2012





**Praxis**  
care

## Praxis Care

### Annual Report 2011/2012

Praxis Care Head Office  
25 - 31 Lisburn Road, Belfast, BT9 7AA

T: 028 9023 4555

F: 028 9024 5535

[www.praxiscare.org.uk](http://www.praxiscare.org.uk)

Charity Numbers: XN80842 / 826  
Registered Number: NI17623



INVESTORS  
IN PEOPLE | Gold

